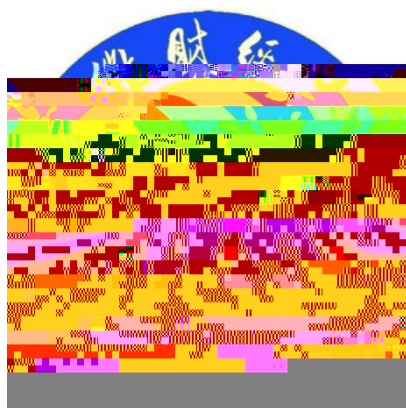


安徽财经大学



2015 10

.....	1
.....	2
.....	2
.....	2
.....	2
.....	2
.....	2
.....	5
.....	5
.....	5
.....	6
.....	8
.....	8
.....	9
.....	10
.....	11
.....	11
.....	11
.....	13
.....	14
.....	14
.....	14
.....	15
.....	16
.....	16
.....	16
.....	17
.....	17
.....	19
.....	19
.....	19
.....	19
.....	19
.....	20
.....	20
.....	20
.....	21

	1959	5		1961	
"	"		2004	5	45
	2		8		39
		12			
				"	"

2014

2014

"

"

"

"

2014

2014

54

1

12

19

3

7

6

4

3

2014

2013

3.32%

2014

10

21935

1.1

2

1613



1.1 2014

2014

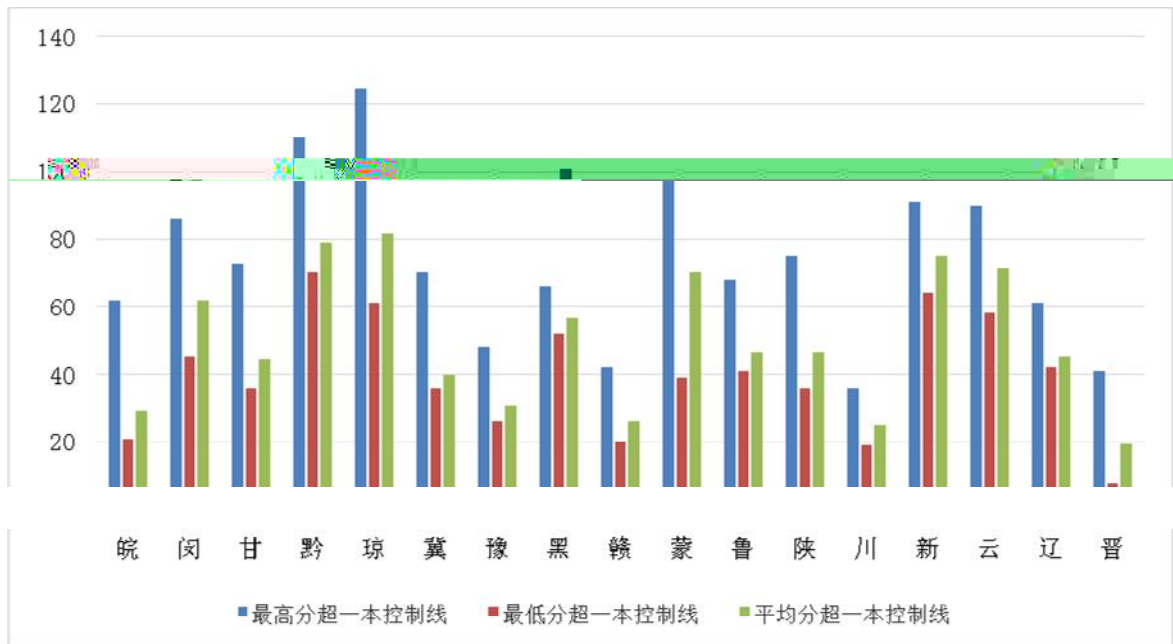
13

21

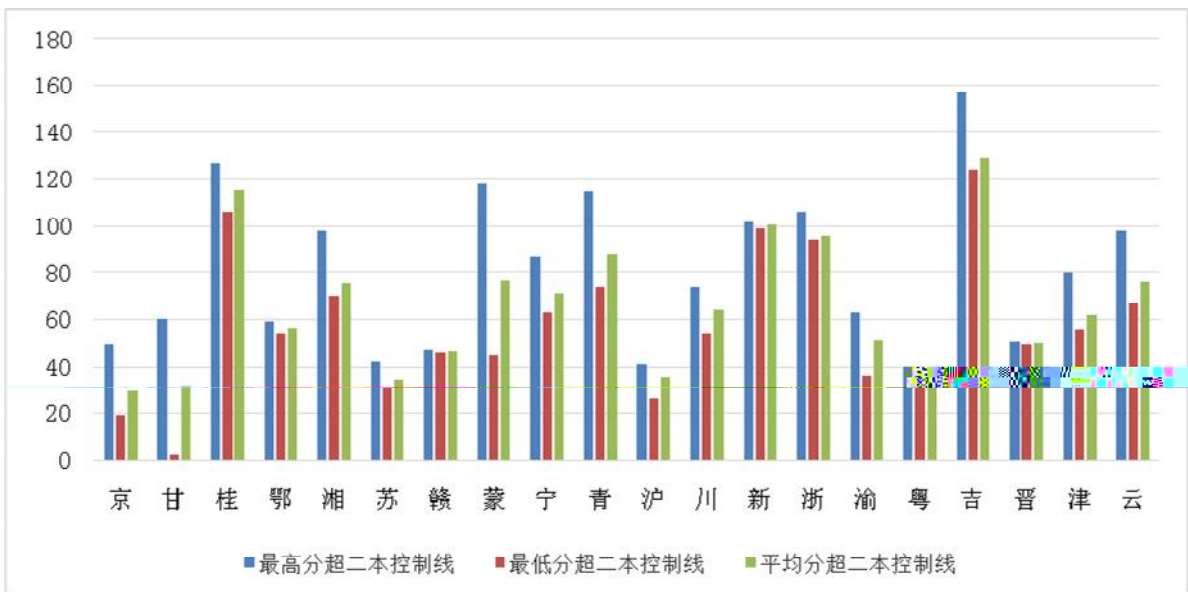
1.1

1.2-1.5

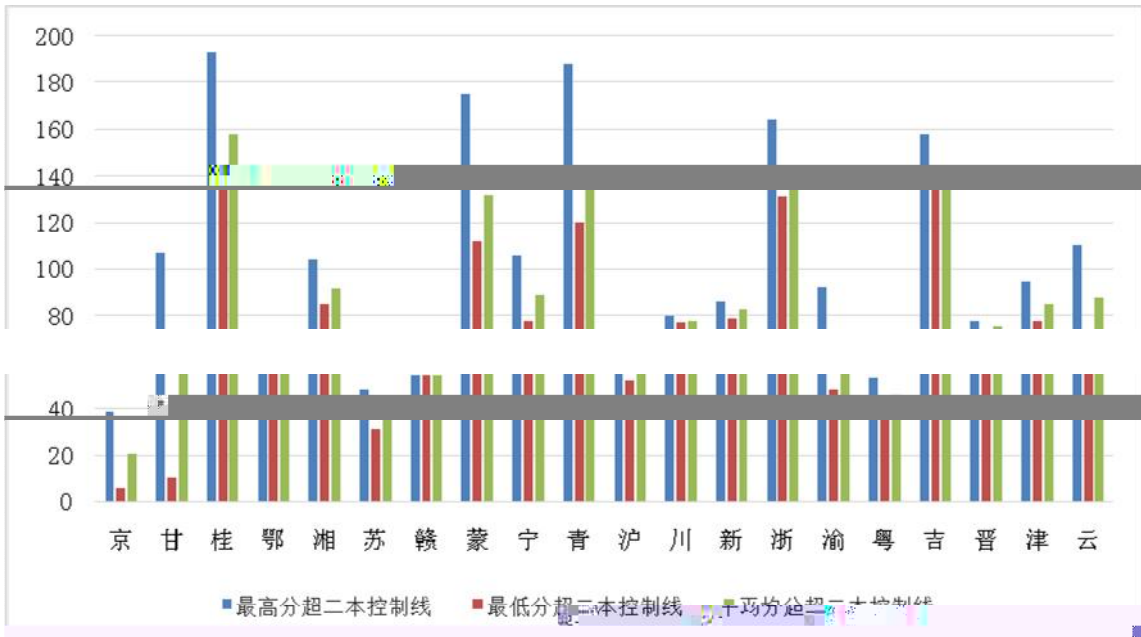
3



1.3 2014



1.4 2014



1.5 2014

2014		1423		995
411		41.3%		107
10.8%		269		27% 35
408	36-50	458	51	129
2.1		36.1%	49.6%	14.3% 2014
				857

15.8%
2.1

						35	36-50	51	
	411	107	269	435	184	408	458	129	995
	41.3%	10.75%	27.04%	43.72%	18.49%	41.0%	46.0%	13.0%	

2014

3591.06

	1696.78	420.89	172.71	
	256.54	2.2		
	2 2 2014			
	302			
2014	3591.06	542.95	890.78	102.45
	1696.78	256.54	420.89	172.71
2014	28.60%	4.32%	7.09%	0.82%

2014 26163 684.25 159

49.2 " " "

" " " 807

415.5 4763

1428.9

2014 310 300

O P 6`7 700

1521

686176 "

2 3 2014

		206.4
		2 9532
	18000	
	72	
	28.7	

789

3 2

4307 2883 1424

6291 58 495

15550 17662 150

71 54 25

2014

6 3

1 1 5

5

198 2014 98

36 I PV4/I PV6

3. 4G 31700

IT

176

2014

113

" " " "

opac

2014		54		2	
5		1			1
	13		12		8
	6			2	
			50	2014	
2	8				
			20		
	"	"	"	"	
			2014	30	
			54		
			AC		

3.2		2014		
			2014 8	" "
			2014 8	" "
			2014 8	
			2014 8	" "
			2014 8	" "
			2014 4	

2014 1904 465 24.42%
 2010 2011 2012 119 2013
 159
 51 3.3

2014
 4
 50

3.3 2014	
	1904
	465
	24.42%
	24%
	30%

2013 113
 2014

1483

2014		606	10
	19	11	
		247	12

			2014
	5		
5		240	465
1301		51524	25
	36		
1422		2661	
100			
		1	
	1		2014
	304		1

2014

∞

				APP			
			248		149		
				7		4	
7		113					
	"			"	"	"	"
	"		"		"	"	"
11	372		16154				229
"		"	2014				11
1600							"
	"				"		"
					260		30
					1000		"
	"	"			"		"
687	"	"	20	"	"	80	"
	"			"			"
		"		"			"
"							
			50				
"	"				"	"	

				3
	15			
2	6	12	19	
27				
"	"			

"	"	"	"
"	"	"	"

			2013	
		162		65
62	35		339	
181	104		2014	
	239			
556				

	5		1	"
" 2	"	"	"	"
"	5	2014"	"	
			SYB	

2014" . "

" "

3 9

" "

" "

2011

" "

" "

"

"

2014

4.1

4.1

		Dr. Wilson	
	Identity Praxis: Bringing Theory and Practice Together in Language Teaching	Peter De Costa	
	Ethics and Applied Linguistics Research	Peter De Costa	

" " " "

" " " " " "

260 33000 816

3629 69.15% 30.69% 0.16%

415

2014

" "

" "

2014	1750	"	" 71. 81%"	" 28. 08%
" " 0. 11% 2014		1870		66. 49%
33. 30%	0. 21%			

2014

808		
25. 12% 203		60. 64% 490
13. 86% 112		0. 37% 3

				3	15
	2	18	31	4	
42	72	96		1	
2	2				

2014

" "

100

" " " " " " " " " "

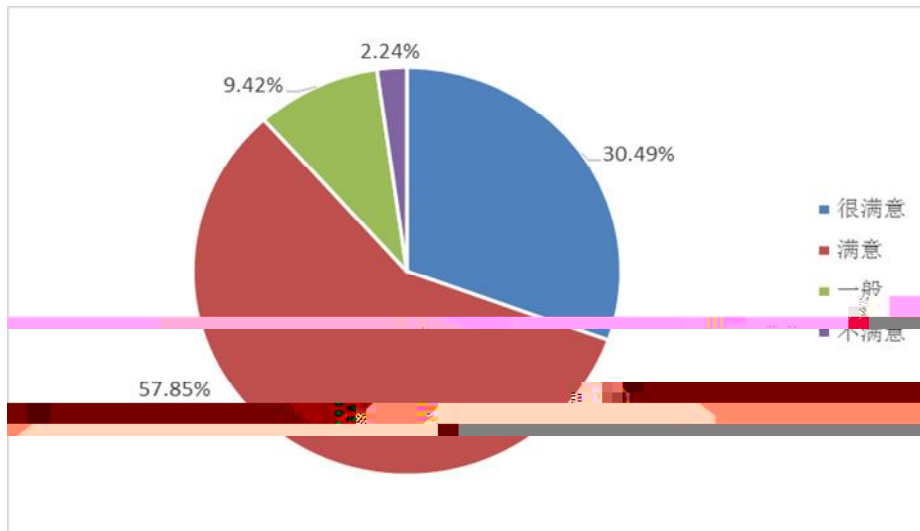
" " " 40

" " 2014
" "

2014 584 12.86%
2014 8 31 2014 85.93%
87.69% 13 70.83% 2014
12 31 95.24% 87.88%
2014
1930 42.50% 585
12.88% 137 3.02%
1208 26.60% 5.1 14
5.1 2014

%											
	1.63	3.92	0.11	12.88	3.02	26.6	11.36	1.5	0.13	0.13	26.4

2014 220 197
" "
30.49% " " 57.85% " "
" 2.24% " " 9.42% "
" 5.1



5.1

90%

80%

73.54%

5.2

5.2

		%		%		%		%		%
	44	19.73	143	64.13	33	14.80	3	1.35	-	-
	70	31.39	132	59.19	20	8.97	1	0.45	-	-
	68	30.49	117	52.47	38	17.04	-	-	-	-
	113	50.67	96	43.05	14	6.28	-	-	-	-
	82	36.77	97	43.50	44	19.73	-	-	-	-
	113	50.67	92	41.26	18	8.07	-	-	-	-
	67	30.04	127	56.95	29	13.00	-	-	-	-
	72	32.29	112	50.22	39	17.49	-	-	-	-
	53	23.77	167	74.89	3	1.35	-	-	-	-
	83	37.22	121	54.26	19	8.52	-	-	-	-
	33	14.80	131	58.74	55	24.66	4	1.79	-	-
	48	21.52	145	65.02	30	13.45	-	-	-	-
	68	30.49	129	57.85	21	9.42	5	2.24	-	-

2014

88

" "

"

"

16

30

" "

2014

113

81

1483

2014- 2015

2014

2014

"

"

"

"

"

"

" 11211"

"

"

"

"

1 2014

020201K					
020202					
120401					
120402					
120403					
120404					
030101K					
030202					
030302					
120201K					
120202					
120206					
120210					
120601					
120801					
120901					
120101					
120102					
120103					
120105					
080701					
080901					
120205					
020401					
020402					
120203K					
120204					

120207					
020302					
020305T					
020301K					
020303					
020304					
020101					
020103T					
020102					
070101					
070102					
071201					
071202					
050207					
050262					
050107T					
050301					
050303					
130310					
130402					
130502					
130503					
130504					
130505					
050101					
081601					
050201					

		2011	2012	2013	2014
	21935	4927	5696	5929	5383
	1136	11(1) 52 11(2) 53 11(3) 50 11(4) 52 11 32	12 1 51 12 2 52 12 3 50 12 4 52 12 5 51 12 35	13 1 48 13 2 48 13 3 49 13 4 50 13 5 50 13 45	14 1 53 14 2 55 14 3 54 14 4 55 14 1 50 14 2 49
		239	291	290	316
	4405	11(1) 53 11(2) 50 11(3) 52 11(4) 50 11(5) 52 11(6) 50 11(7) 52 11(8) 51 11(9) 54 11(10) 49 11(11) 50 11(1) 53 11(2) 48 11(1) 45 11(2) 43 11 32 11(1) 51 11(2) 50 11(3) 52 11(4) 51	12 1 52 12 2 51 12 3 49 12 4 48 12 5 50 12 6 50 12 7 49 12 8 51 12 9 51 12 10 49 12 0 15 12 1 51 12 2 51 12 3 50 12 4 51 12 1 43 12 2 44 12 1 54 12 2 54 12 1 51 12 2 51	FRM13 0 13 0 40 13 1 53 13 2 50 13 3 48 13 4 48 13 1 44 13 2 41 13 1 46 13 2 45 13 3 46	14 1 48 14 2 47 14 3 48 14 4 48 14 5 47 14 6 47 14 7 45 14 8 47 14 1 51 14 2 50 14 3 50 14 4 50 14 0 50 14 1 50 14 2 49 14 3 50 14 4 49 14 1 50 14 2 51 14 3 50 14 1 50 14 2 49

				12 3 52 12 4 50		13 4 42 13 1 43 13 2 44 13 3 39 13 1 43 13 2 44		
		988		1117		1224		1076
	1479	11(1) 52 11(2) 51 11(3) 51 11(4) 49 11(1) 43 11(2) 42 11 46	12 1 59 12 2 60 12 3 55 12 4 54 12 1 43 12 2 38 12 1 41 12 2 40		13 1 52 13 2 50 13 3 52 13 4 49 13 1 39 13 2 38 13 1 39 13 2 39	14 1 50 14 2 48 14 3 49 14 4 49 14 1 47 14 2 55 14 1 49 14 2 49 14 1		
		334		390		358		397
	4279	11(1) 55 11(2) 59 11(3) 58 11(4) 55 11(5) 56 11(6) 58 11(7) 50 11(1) 49 11(2) 48 11(3) 51 11(4) 48 11(1) 60 11(2) 59 11(3) 61 11(4) 56	12 1 50 12 2 54 12 3 53 12 4 53 12 5 55 12 6 57 12 7 54 12 8 55 12 9 50 12 1 41 12 2 41 12 3 37 12 4 38		13 1 52 13 2 55 13 3 55 13 4 55 13 5 53 13 6 53 13 7 54 13 8 53 13 9 50 13 10 50 13 1 48 13 2 50 13 3 48 13 4 49	14 1 54 14 2 51 14 3 51 14 4 50 14 5 51 14 6 50 14 7 51 14 8 51 14 1 49 14 2 49 14 3 49 14 4 49 14 1 48 14 2 48		
				12 1 54		13 1 54		14 1 48 14 2 48

		11(1) 59 11(2) 59 11 40	12 2 56 12 3 52 12 4 53 12 5 54 12 6 48	13 2 54 13 3 51 13 4 52 13 5 54	14 3 47 14 4 47 14 5 47
			12 1 58 12 2 54 12 3 56 12 0 61	13 1 49 13 2 48 13 3 47	14 1 47 14 2 45 14 3 46
		981	1184	1134	980
		11(1) 39 11(2) 35 11(3) 34 11(4) 41 11(0) 35 11 48 11(1) 44 11(2) 42 11(1) 44 11(2) 43 11 45	12 43 12(1) 45 12(2) 43 12(3) 38 12(4) 43 12(1) 53 12(2) 58 12(1) 40 12(2) 44 12(0) 57	13 44 13(1) 46 13(2) 47 3(1) 35 13(2) 39 13(1) 35 13(2) 30 13(1) 45 13(2) 43 13(3) 54 13 46	14 1 40 14 2 40 14(1) 49 14(2) 50 14(0) 4 14(0) 50 14(1) 40 14(2) 38 14(1) 54 14(2) 55 14 50
	1848				
		450	464	464	470
		11(1) 51 11(2) 49 11(3) 53 11(4) 50 11 1 53 11 2 53	12 1 49 12 2 49 12 3 53 12 4 50	13 1 50 13 2 51 13 3 49 13 4 50	14 1 50 14 2 49 14 3 49 14 1 50 14 2 50 14 30
	1617				

		11 28	12 1 54	13 1 55	14 27
		11 30	12 2 54	13 2 57	14 30
		11 35	12 35	13 31	14 30
		11 29	12 35	13 24	
			12 22	13 23	
				13 30	
		431	401	420	365
		11(1) 45	12 1 49	13 1 50	14 1 50
		11(2) 46	12 2 48	13 2 46	14 2 50
			12 3 49	13 3 45	14 0 5
		11 28		13 4 12	
		11 28	12 29	13 0 2	14 30
			12 20	13 25	
		147	195	180	135
		11 28	12 21	13 34	134 30
			12 36	13 33	14 30
		11 32	12 1 34	13 1 44	14 1 49
			12(2) 40	13 2 43	14 2 47
		11(1) 38	12 3 27	13 1 29	14 1 23
		11(2) 38	12 4 26	13 2 29	14 2 23
		11(3) 25	12 5 26	13 2 29	14 3 22
		11(4) 25	12 6 25	13 3 29	14 4 22
		11(1) 23		13 4 29	14 1 24
		11(2) 24	12 1 26	13 1 27	14 2 24
		11(3) 24	12 2 27	13 2 27	14 3 24
		11(4) 24	12 3 27	13 3 27	14 4 24
		11(5) 24	12 4 26	13 4 27	
		11(6) 24	12 5 26	13 1 27	14 1 27
			12 6 26	13 2 27	14 2 27
		11(1) 20	12 7 26	13 3 26	14 3 27
		11(2) 18	12 8 26	13 4 26	14 4 27
			12 9 26		
		11(1) 27	12 10 26	13 1 27	14 1 26
		11(2) 26		13 2 27	14 2 27
		11(3) 27	12 1 28	13 3 26	14 1 26
		11(4) 26	12 2 26	13 4 26	14 2 25

			12 1	27			14 3	25	
		11(1)	19	12 2	24	13 1	31	14 4	24
				12 3	24	13 2	28		
		11(2)	17	12 4	24	13 1	23		
						13 2	20		
				12 1	23	13 3	21		
						13 4	20		
				12 2	21	13 5	17		
						13 1	25		
						13 2	27		
		509		694		694		603	
						13 1	41		
				12 1	47	13 2	44		
		11(1)	52	12 2	47	13 1	46	14 0	50
		11(2)	45	12 3	45	13 2	45	14 0	49
		11(3)	50	12 4	41				
						13 1	45	14 1	50
						13 2	50	14 2	50
	1497	11(1)	50	12 1	53				
		11(2)	45	12 2	46	13 1	45	14 0	60
						13 2	45		
								14 0	60
		11 1	49	12 1	56				
		11 2	50	12 2	57	13 1	43		
						13 2	41		
		341		392		445		319	
								14 1	40
		11(1)	42			13	45	14 2	40
		11(2)	43	12(1)	42				
	1960			12(2)	38	13(1)	39	14(1)	49
						13(2)	41	14(2)	48
		11(1)	32						

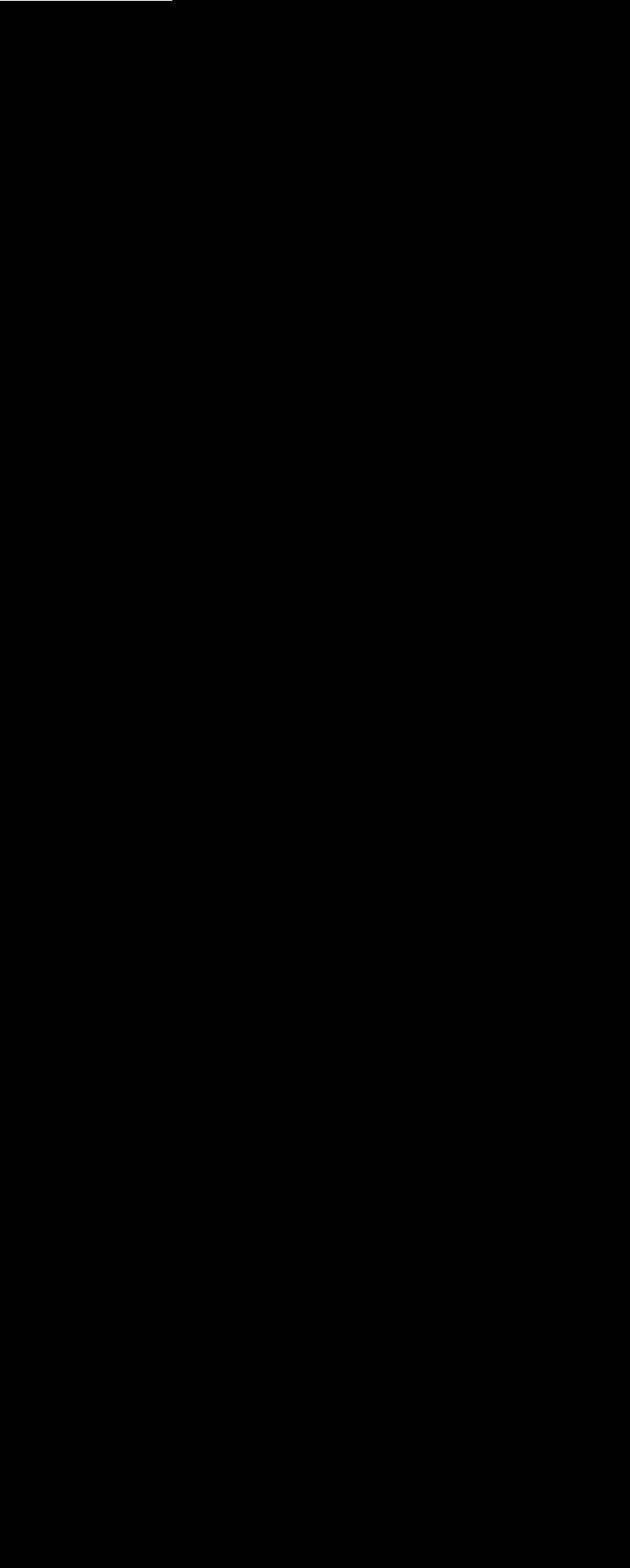
		11(2) 36	12 1 42	13 1 41	14 1 50
		11(3) 30	12 2 42	13 2 36	14 2 50
		11(4) 27	12 3 43	13 3 46	14 3 50
		11(0) 20	12 4 48	13 4 47	
		11(1) 35	12 5 32	13 1 48	14 1 49
		11(2) 35	12 1 35	13 2 43	14 2 49
			12 2 40	13 3 47	14 0 40
		11 35	12 29	13 0 30	14 1 48
			12 42	13 35	14 1 50
		11 48		13 1 39	
				13 2 44	
		383	433	581	563
		11(1) 24	12 1 21	13 1 26	14 1 33
		11(2) 23	12 2 22	13 2 30	14 2 32
		11(3) 24	12 3 21	13 3 29	14 3 31
		11(4) 23	12 4 20	13 4 29	14 4 33
	557	11 30	12 1 26	13 13	14 30
			12 2 25	25	
		124	135	139	159
	522	118	135	144	125

1. 2014
2.

3 2014

	2014			1969	489	438	558	503	518.7	14	28.7	
	2014			1163	541	500	584	554	560.5	13	20.5	
	2014			8	543	495	534	501	515.5	-42	-27.5	
	2014			7	565	507	557	526	536.3	-39	-28.7	
	2014			40	506	408	592	551	567.7	45	61.7	
	2014			30	561	482	607	593	599.3	32	38.3	
	2014			7	516	459	566	469	530.1	-47	14.1	
	2014			28	516	459	589	552	560.4	36	44.4	
	2014			3	543	499	559	501	530.7	-42	-12.3	

	2014	B		15	552	490	576	571	572.6	19	20.6	
--	------	---	--	----	-----	-----	-----	-----	-------	----	------	--



							563	500	519.9	-1	18.9	
--	--	--	--	--	--	--	-----	-----	-------	----	------	--

	2014			7	444	390	431	416	425.4	-28	-18.6	
	2014			3	540	475	555	527	553	-13	13	
	2014			15	540	475	576	559	564.9	19	24.9	

2014

4 2014

	107	269	435	184	
	249	626	120		995
35	36-50		51		
408	458		129		

5 2014

	302			
2014	3591.06	542.95	890.78	102.45
	1696.78	256.54	420.89	172.71
2014	28.60%	4.32%	7.09%	0.82%

6 2014

1		21935
2		995
3		93.15%
4		22.83
5		4565.28
6		923.92
7		79.4
8		32704
9		185722
10		9.28

7 2014

		206.4
		2.9532
	18000	
	72	
	28.7	

8 2000

1				2007	
2				2008	
3				2008	
4				2009	
5	2			2010	

29				2013	
30				2014	
31				2014	
32				2003	
33				2004	
34				2004	
35				2004	
36				2004	
37				2004	
38				2005	
39				2005	
40				2005	
41				2005	
42				2006	
43				2006	
44				2006	
45			" "	2006	
46				2006	
47				2006	
48				2006	
49				2007	
50				2007	
51				2007	
52				2007	
53				2007	
54			International economics	2009	
55				2009	
56				2009	
57				2009	
58				2009	
59				2009	
60				2013	
61				2012	
62				2012	
63				2012	
64				2012	
65				2012	
66			International Economics	2012	
67				2013	

68				2013	
69				2013	
70				2013	
71				2014	
72				2014	
73				2014	
74				2014	
75				2014	
76			" "	2009	
77				2011	
78				2008	
79				2010	
80				2011	
81				2013	
82				2014	
83				2013	
84				2002	
85				2002	
86				2004	
87				2004	
88				2008	
89				2008	
90				2010	
91				2010	
92				2011	
93				2013	
94				2013	
95				2014	
96				2014	
97				2013	
98				2012	
99				2013	
100				2014	
101				2014	
102				2011	
103				2013	

104				2014	
105				2012	
106				2012	
107				2012	
108				2012	
109				2013	
110				2013	
111				2013	
112				2013	
113				2014	
114				2014	
115				2014	
116				2014	
117				2012	
118				2012	
119				2013	
120				2013	
121				2014	
122				2014	

9 2014

25	245	4.03%	
30	501	8.25%	
35	289	4.76%	
55	371	13.21%	
60	802	25.97%	
120	1018	41.29%	

10 2014

1		4	
2		2	
3		5	

4	MOC	6
5		15
6		4
7		3
8		2
9		4
10		1
11		1
12		1
13		2
14		556
		606

11 2014

1				
2				
3				
4				
5			" "	
6			" . . "	
7			— —	
8			()	
9		" "	" " ()	
10				
11				

12			
13			
14			
15			
16			
17			
18			
19			

12 2014

1		147
2		41
3		7
4		5
5		16
6		4
7		7
8		10
9		2
10		4
11		4
		247

13 2014

2014 8 31

					%
		141	134	7	95.04
		49	45	4	91.84
		100	85	15	85
		273	260	13	95.24
		53	49	4	92.45
		89	67	22	75.28
		54	44	10	81.48
		48	37	11	77.08
		295	272	23	92.20
		83	75	8	90.36
		75	74	1	98.67
		137	127	10	92.70
		87	65	22	74.71
		128	128	-	100
		47	33	14	70.21
		127	123	4	96.85
		40	38	2	95
		174	157	17	90.23
		85	79	6	92.94
		87	80	7	91.95
		47	47	-	100
		40	39	1	97.50
		430	405	25	94.19
	()	104	104	-	100
		157	124	33	78.98
		130	115	15	88.46
		99	90	9	90.91
		93	87	6	93.55

					%
		37	34	3	91.89
		33	29	4	87.88
		29	28	1	96.55
		37	33	4	89.19
		127	81	46	63.78
		31	25	6	80.65
		29	22	7	75.86
		144	76	68	52.78
		76	38	38	50
		86	60	26	69.77
		31	29	2	93.55
		36	25	11	69.44
		140	121	19	86.43
		152	143	9	94.08
		39	29	10	74.36
		76	69	7	90.79
		45	45	-	100
		121	112	9	92.56
		4541	3982	559	87.69

14 2014

	%										
	1.42	1.42	0.71	12.06	-	57.45	17.73	2.13	1.42	-	0.71
	-	-	-	6.12	-	61.22	20.41	-	4.08	-	-
	-	-	-	9	-	-	13	2	-	-	61
	1.83	1.47	-	18.68	-	-	18.68	3.30	-	-	51.28
	1.89	-	-	15.09	-	-	15.09	5.66	-	-	54.72
	-	-	-	10.11	-	-	14.61	2.25	-	-	48.31
	-	-	-	11.11	-	-	12.96	9.26	-	-	48.15
	-	-	-	20.83	-	-	18.75	2.08	-	-	35.42
	1.02	2.03	-	14.92	3.05	38.31	14.24	2.37	-	-	16.27
	2.41	3.61	-	2.41	4.82	34.94	10.84	1.20	-	-	30.12

	%										
	-	4	-	16	10.67	44	6.67	1.33	-	-	16
	4.38	21.17	-	13.87	10.22	18.98	5.84	-	-	-	18.25
	5.75	9.20	1.15	10.34	12.64	14.94	1.15	-	-	-	19.54
	2.34	16.41	-	16.41	14.84	21.88	10.16	-	-	-	17.97
	4.26	8.51	-	8.51	10.64	21.28	8.51	-	-	-	8.51
	3.15	14.17	1.57	17.32	14.96	16.54	7.87	-	-	-	21.26
	2.50	5	-	20	15	12.50	2.50	-	-	-	37.50
	1.15	1.72	-	5.75	2.30	67.24	8.05	0.57	-	3.45	-
	-	-	-	8.24	2.35	58.82	17.65	5.88	-	-	-
	-	3.45	-	8.05	-	74.71	5.75	-	-	-	-

		%										
		2.13	-	-	8.51	2.13	76.60	10.64	-	-	-	-
		-	2.50	-	17.50	2.50	72.50	2.50	-	-	-	-
		0.93	2.33	-	20.23	1.40	50.23	14.19	3.26	-	-	1.63
	()	0.96	0.96	-	27.88	2.88	53.85	10.58	-	-	-	2.88
		2.55	2.55	0.64	22.93	1.27	36.94	7.64	2.55	-	-	1.91
		-	1.54	-	18.46	1.54	50.77	9.23	0.77	-	-	6.15
		5.05	4.04	-	11.11	2.02	-	23.23	-	-	-	45.45
		3.23	5.38	-	17.20	3.23	-	12.90	1.08	-	-	50.54
		-	2.70	-	8.11	5.41	-	13.51	-	-	-	62.16
		-	3.03	-	6.06	-	-	3.03	3.03	-	-	72.73
		-	10.34	-	17.24	-	-	17.24	-	-	-	51.72
		-	16.22	-	5.41	2.70	-	16.22	2.70	-	-	45.95

		%									
	-		-	1.97	1.32	-	1.32	-	-	-	86.84
	2.56		-	-	-	-	2.56	-	-	-	66.67
	-		-	2.63	2.63	-	6.58	-	-	-	75
	-		-	-	2.22	-	2.22	-	-	-	95.56
	-	1.65	-	3.31	0.83	66.94	10.74	2.48	-	-	6.61
	1.63	3.92	0.11	12.88	3.02	26.60	11.36	1.50	0.13	0.13	26.40

	1		1	6		9	1		
			2	7		5		3	3
	3		2	7		11	3	3	4
5	3	1		5		5	2	1	1
	2		1	3		10	1		
2	4		2	7		1	4	5	5

18 2014

12						2014			acj xtd201404	4	
13						2014			acj xtd201405	4	
14						2014			acj xtd201406	4	
15						2014			acj xtd201407	4	
16						2014			acj xtd201408	4	
17						2014			acj xtd201409	4	
18						2014			acj xtd201410	4	